



UC Riverside

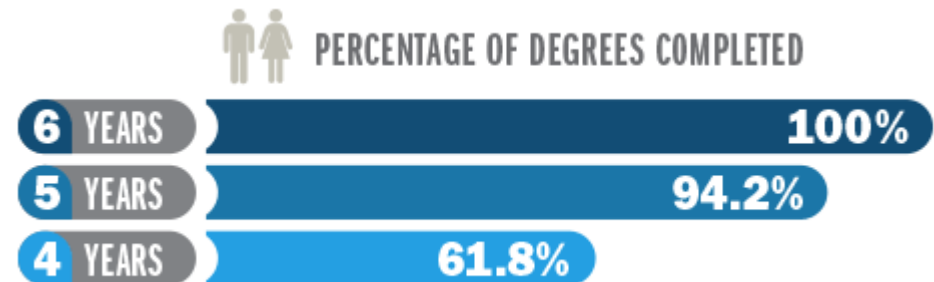
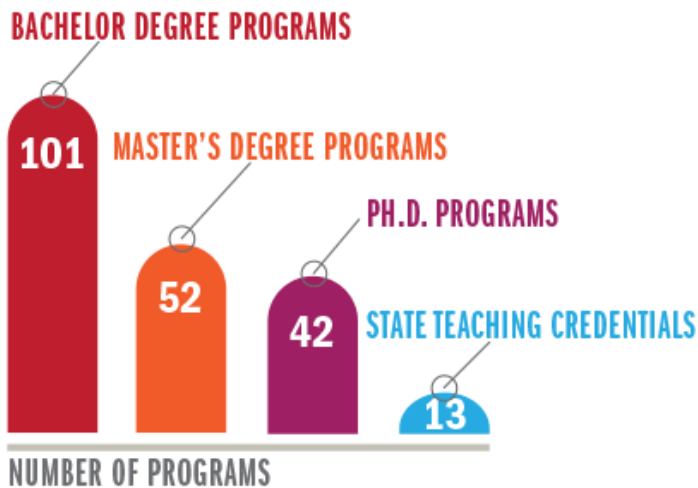
Center for Broadband Policy and Digital Literacy



UC Riverside

Quick Facts

- Founded in 1954 the University of California, Riverside is one of 10 universities within the prestigious University of California system, and the only UC located in Inland Southern California.
- UCR's current enrollment is more than 21,000 students, with a goal of 25,000 students by 2020. The campus is in the midst of a tremendous growth spurt with new and remodeled facilities coming on-line on a regular basis.





UC Riverside

National Accolades

UCR No. 2 in Washington Monthly Rankings

For the third consecutive year, Riverside is recognized on measures of research, service and social mobility

By [Bettye Miller](#) On AUGUST 24, 2015

SHARE THIS ARTICLE:      

- > [Kiplinger's Personal Finance](#) (2013) ranked UCR as one of the **top-100 Best Values in Public Colleges**. UCR placed in the top-100 thanks to its high four-year graduation rate, low average student debt at graduation, abundant financial aid, a low sticker price, and overall great value.
- > [Leiden University](#) (2013) ranked UCR **35th** in the world and **29th** in North America in their survey of the 500 top universities. **The Leiden Ranking** is based on a sophisticated set of bibliometric indicators that measures the scientific impact of universities and of their involvement
- > [The National Research Council](#) ranked **27 of UCR's doctoral programs** in their 2010 report, [demonstrating the campus' progress in research excellence](#). The report is issued every 15 years.



UC Riverside

Reflecting California's Diversity

Ethnicity

- > African American **6.3%**
- > Asian/Asian American **35.4%**
- > Chicano and Latino **32.1%**
- > Native American **0.5%**
- > White/Caucasian **17%**
- > other ethnic/unknown **2.2%**
- > international **6.5%**



- > [*U.S. News & World Report*](#) (2013–14) ranked UCR highly in several categories:
 - > **12th** in the nation in diversity



UC Riverside

School of Public Policy



School of Public Policy

The UC Riverside School of Public Policy was launched in 2012.



"Public policy as a discipline pertains to almost everything we do on this campus, which is why this is such an exciting program for so many people at UCR."

—Anil B. Deolalikar, Founding Dean

UC Riverside is only the third campus in the UC System to have a school of public policy.



School of Public Policy

Mission: Serving Inland Southern California and Beyond

The School of Public Policy will train a new generation of forward-thinking public policy leaders equipped to address the complex, interrelated challenges of the 21st Century.

The School of Public Policy will utilize:

- (i) a diverse, interdisciplinary curriculum that emphasizes evidence-based policy research as well as cross-learning from both international and domestic problem-solving experiences, and
- (ii) a wide variety of professional internships that emphasizes experiential learning.



School of Public Policy

Newest Center

Center for Broadband Policy and Digital Literacy



School of Public Policy

Center for Broadband Policy & Digital Literacy

“A regional laboratory for national policy”

VISION STATEMENT

To be a national leader in broadband policy and research, thus improving quality of life for all and empowering disadvantaged people to become economically independent.

MISSION STATEMENT

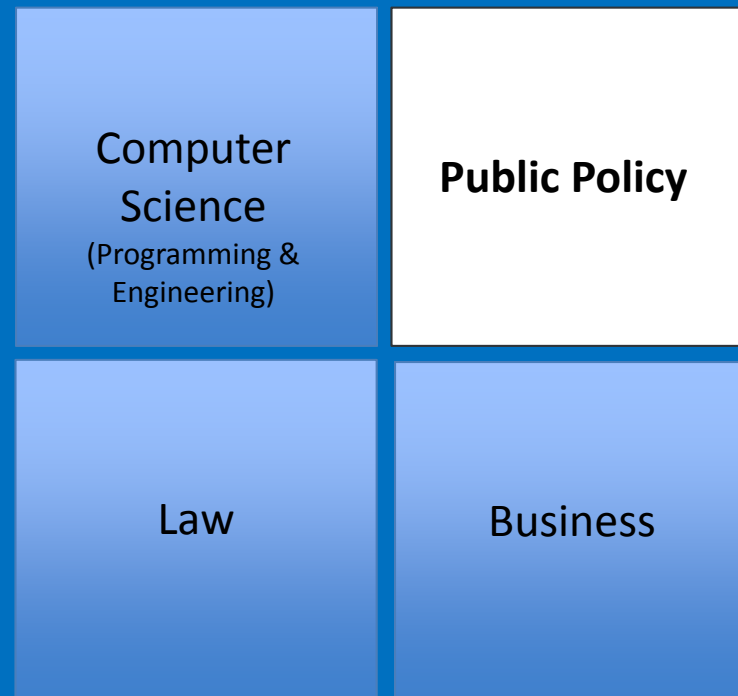
To serve the people of California through a collaborative approach that shapes and influences local, state and national policy on broadband access and digital literacy through pragmatic, data-driven research.



School of Public Policy

Center for Broadband Policy & Digital Literacy

Filling a Void



Internet Related Areas of Study at Academic Institutions



UC Riverside

Reflecting California's Diversity

	Riverside County	City of Riverside	San Bernardino County	City of San Bernardino
Population, 2014 Est.	2,329,271	319,504	2,112,619	215,213
African American	7%	7%	9.5%	15%
Asian, Pacific Isl.	7.2%	7.8%	7.8%	4.4%
Hispanic/Latino	47.4%	49%	51.7%	60%
Caucasian Non Hispanic/Latino	37.4%	34%	30.6%	19%
Foreign Born	21.9%	23%	21.1%	22.7%
Non-English Speaking Household	39.9%	42.6	41.1%	46.7%
High School Graduate	79.6%	77.7%	78.2%	67.7%
Bachelor's Degree	20.5%	22.2%	18.7%	11.2%

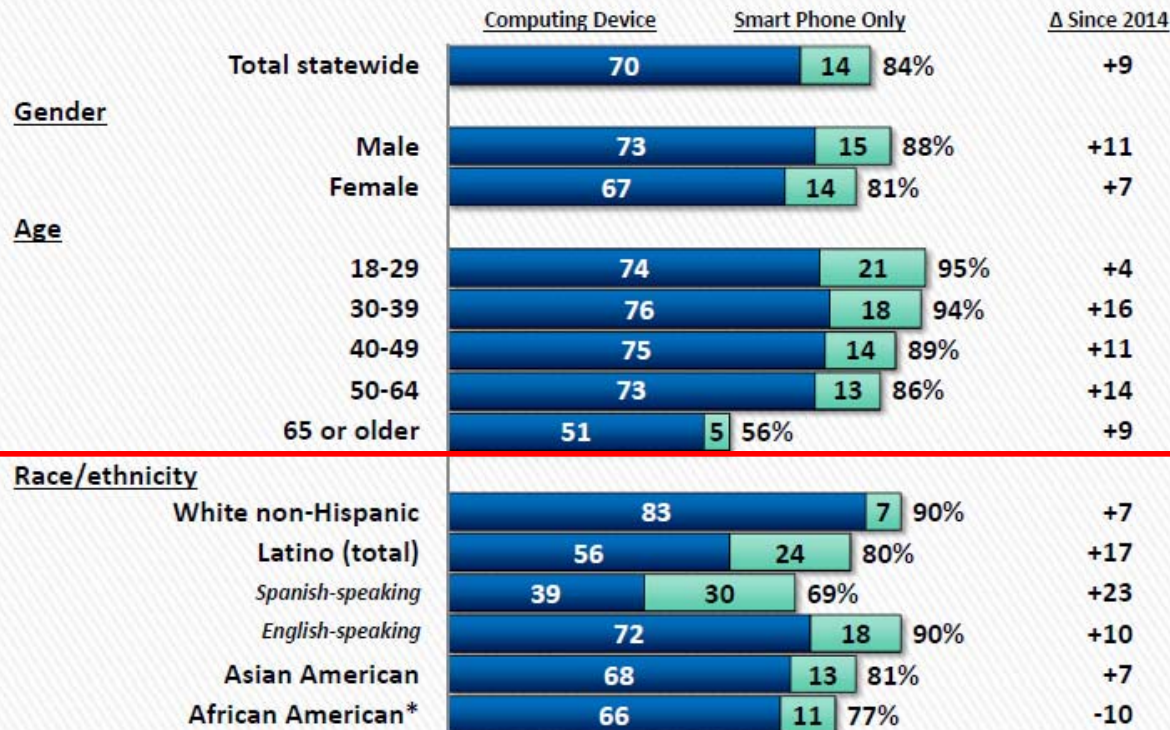


UC Riverside

Rural Next to Urban

Table 4a

Broadband Internet Connectivity at Home *(by gender, age and race/ethnicity of householder)*



* Small sample size.



UC Riverside

Rural Next to Urban

Table 4c
Broadband Internet Connectivity at Home
(by marital and parental status, household income and FPL)

	Computing Device	Smart Phone Only		Δ Since 2014
Total statewide	70	14	84%	+9
Marital status				
Married	77	11	88%	+7
Not married/live together	62	23	85%	+13
Single/never married	72	18	90%	+8
Widowed/separated/divorced	56	12	68%	+9
Child under age 18 in household*				
Yes	73	18	91%	+14
No	69	12	81%	+7
Household income				
Less than \$22,000	43	25	68%	+15**
\$22,000 - \$39,999	64	19	83%	+3
\$40,000 - \$99,999	85	8	93%	+10
\$100,000 or more	94	3	97%	+2
Federal Poverty Level (FPL)				
Less than 138% FPL	48	26	74%	N/A
More than 138% FPL	80	9	89%	N/A

* 2014 data includes only parents of children in K-12 schools.

** The comparative income range from the 2014 survey was less than \$20,000.

N/A = Not measured in 2014 survey.



UC Riverside

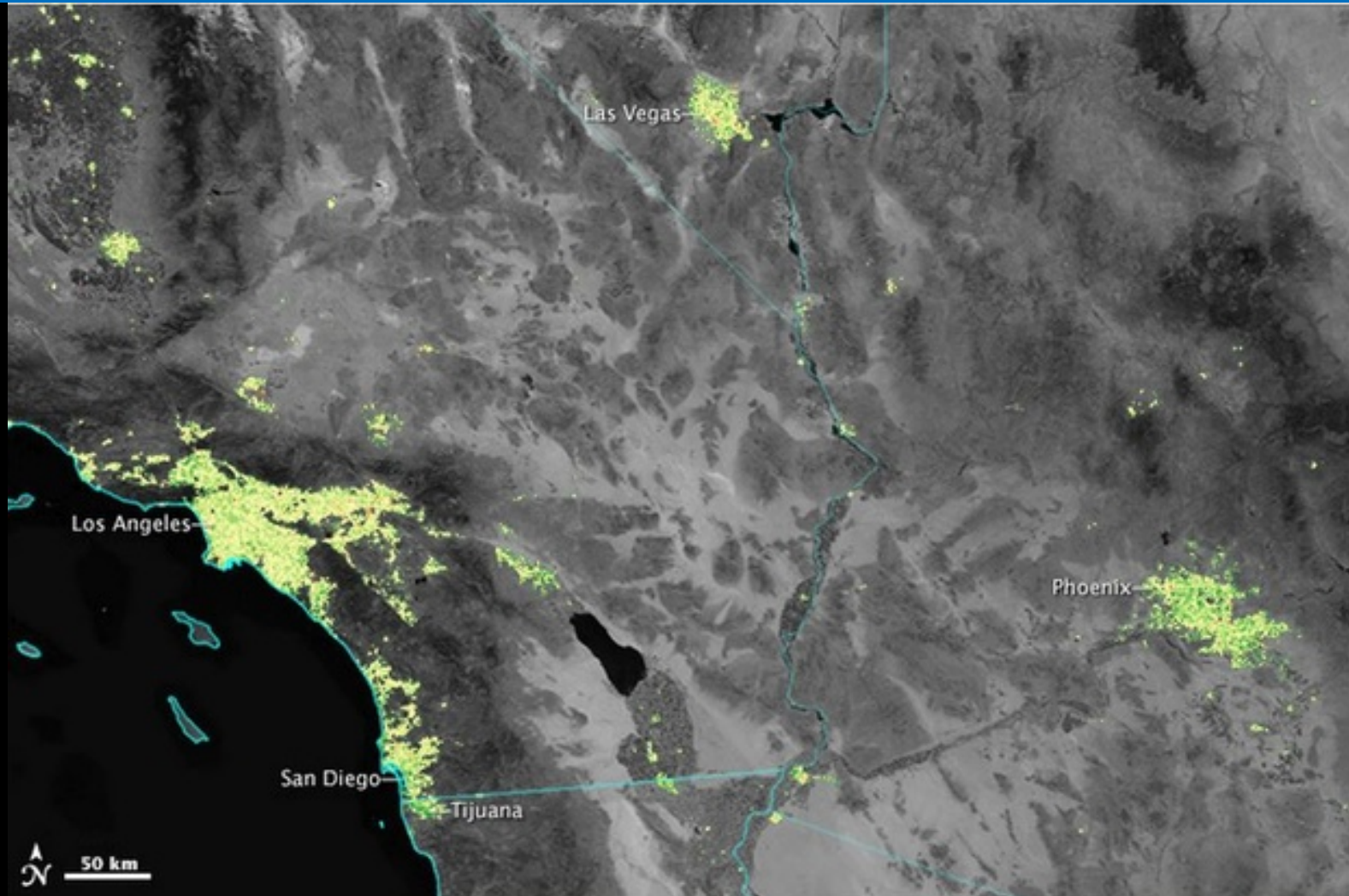
Rural Next to Urban





UC Riverside

Rural Next to Urban...a Different Look





UC Riverside

Rural Next to Urban

Table 4d
Broadband Internet Connectivity at Home
(by region and geocode)

	Computing Device	Smart Phone Only		Δ Since 2014
Region				
Total statewide	70	14	84%	+9
Los Angeles County	70	14	84%	+8
Inland Empire	65	17	82%	+10
Orange/San Diego	72	11	83%	+5
Central Valley	66	16	82%	+9
San Francisco Bay Area	75	14	89%	+10
Other California	70	17	87%	+11
Geocode				
Urban population areas 10,000+	73	13	86%	N/A
Suburban population areas 10,000+	67	19	86%	N/A
Population areas <10,000	63	16	79%	N/A

N/A = Not measured in 2014 survey.



School of Public Policy

Center for Broadband Policy & Digital Literacy

Areas of focus

- Broadband adoption strategies
- Broadband policy research
 - Digital Divide Impacts
 - Education
 - Workforce/Employment
 - Access to Government/Civic Participation
 - Net Neutrality
 - Telemedicine (In Partnership with CTN and UCR SoM)
 - Broadband as a utility
 - Annual Broadband Adoption Survey



School of Public Policy

Center for Broadband Policy & Digital Literacy

Research Resource for Policy Makers

- California Broadband Council
- Congress
- California State Legislature
- CPUC
- FCC



School of Public Policy

Center for Broadband Policy & Digital Literacy

Progress to Date & Next Steps



School of Public Policy

Center for Broadband Policy & Digital Literacy

- Fund raising
 - On going operations
 - Research Projects
 - Fund Endowment
 - \$7.5 million endowment makes Center “self-sustaining”
- Meetings with Policy Makers and Other Interested Parties
- Recruitment of faculty
 - Two professorships reserved for specialists in Broadband Policy & Digital Literacy
 - Center Chair – Goal of hiring for start date of January 2017
 - Second professor within 5 years
- First Policy Paper in Progress



School of Public Policy

Center for Broadband Policy & Digital Literacy

Thank You

New UC Riverside Center Aims to Boost Broadband Policy Research

BY: Maggie Cabrey, Techwire | December 14, 2016

(Techwire) -- As technology becomes more integrated in our everyday lives, it seems the line separating those who have Internet access and the individuals who don't is becoming more apparent. Looking to help close this digital divide, the University of California-Riverside (UCR) plans to open a new Center for Broadband Policy and Digital Literacy.

The university is the only UC in inland Southern California, a rural-next-to-urban region where the divide is especially evident. Part of UCR's School of Public Policy, the Center for Broadband Policy and Digital Literacy will tackle digital inclusion issues occurring in the inland area and assist the California Emerging Technology Fund (CETF) by expanding broadband policy research in the state.

In development since early 2015, the center was co-founded by Lloyd Levine, president of Sacramento-based consulting firm Filament Strategies, and university Dean Anil Deolalikar. Levine is a former state Assemblymember.

In an interview with *TechWire*, Levine spoke on the project's progress, future steps and the purpose behind building a Center for Broadband Policy and Digital Literacy.

"I see us providing great benefit to policymakers by providing real-world scientific research on exactly what the digital divide is and what it means to be on the wrong side of the digital divide," Levine said.

The school will be taking a collaborative approach to accomplish its mission, with plans to partner with the UCR Graduate School of Education to support the CETF School2Home program, a state initiative that aims to integrate more technology in low-performing schools. The center will also work with the California Telehealth Network and UCR School of Medicine to support telemedicine research and curriculum.

As work to build the center continues, UCR is in the process of securing funding for the project, which includes a \$7.5 million endowment to make the center "self-sustaining." Staff are also developing a website and Board of Expert Advisers.

In addition, Levine said they are working on their first policy paper to release early next year and conducting a national search for the program's first professor. The professor, who will also serve as chair for the new center, would officially start on July 1, 2017.

Levine gave a presentation on the project's development at the California Broadband Council meeting Thursday, where he told policymakers how the center has been meeting with a variety of government entities, such as the California Public Utilities and Federal Communications Commission, to introduce the program.

"If government is pushing everything to digital, which they should because it's more efficient, they need to be part of the solution to providing access to people so all those who are a part of the constituency that makes up government have access to that which they are funding," said Levine. "I want the center to be researching those [issues], putting forth policy papers that shine light on the impacts and provide policy solutions."

This article was originally published on [Techwire](#).